



OPEN **IN**FORMATION ENVIRONMENT
FOR COLLABORATIVE **PRO**CESSES
THROUGHOUT THE LIFECYCLE OF A BUILDING

D42 PUBLIC WEB SITE

Project no: IP 026716-2
Instrument: Integrated Project
Start: September 2006
Due date: 30 November 2010

Project acronym: InPro
Thematic priority: 3.4.4.2
Duration: 4 years
Submission date: 30 November 2010

Dissemination: Public
Partners: [NCC](#);
Authors: [Birgitta Berglund](#);
Revision: Final

Project co-funded by the European Commission within the Sixth Framework Programme (2002-2006)

COPYRIGHT

Copyright© 2006 – 2010, The InPro Consortium, consisting of:

- NCC: NCC Construction Sverige AB, Sweden
- Bouygues: Bouygues Travaux Publics SA, France
- Hochtief: Hochtief Aktiengesellschaft, Germany
- White: White Arkitekter AB, Sweden
- Client Forum: Swedish Association of Building Construction Clients (Byggherreforum), Sweden
- Granlund: Olof Granlund Oy, Finland
- Bauhaus: Bauhaus-Universität Weimar, Germany
- Luleå: Luleå University of Technology, Sweden
- Maribor: University of Maribor, Slovenia
- AEC3: AEC3 Ltd, United Kingdom
- P3: P3 - Digital Services GmbH, Germany
- CSTB: Centre Scientifique et Technique du Bâtiment, France
- TNO: Netherlands Organisation for Applied Scientific Research, The Netherlands
- Dortmund: Universität Dortmund, Germany
- MaxBögl: Max Bögl Bauservice GmbH & Co. KG, Germany
- YIT: YIT Kiinteistötekniikka Oy, Finland
- J-CDS: JAQAR Concurrent Design Services B., the Netherlands
- Eurostep: Eurostep AB, Sweden

This document may not be copied, reproduced, or modified in whole or in part for any purpose without written permission from the InPro Consortium. In addition to such written permission to copy, reproduce, or modify this document in whole or part, an acknowledgement of the authors of the document and all applicable portions of the copyright notice must be clearly referenced.

All rights reserved. This document may change without notice.

Disclaimer: The information in this document is provided as is and no guarantee or warranty is given that the information is fit for any particular purpose. The user thereof uses the information at its sole risk and liability.

EXECUTIVE SUMMARY

The InPro public web site was opened during the first months of the project. It can be found at address www.inpro-project.eu. The site has been maintained and updated continuously throughout the project.

The web site contains basic information about the project, the project participants and the members of the InPro Cluster. All public reports and deliverables are available from the web as well as other articles and papers that have been written about the project and its results.

The web site will remain on the Internet after the end of the project. The content will change slightly for a more long term perspective.

TABLE OF CONTENTS

1 INTRODUCTION	6
2 EVOLUTION OF THE WEB SITE	8
2.1 HISTORY	8
2.2 LONG-TERM MANAGEMENT	8
3 CONTENT	9
3.1 PUBLIC PAGES	9
3.2 INTERNAL PAGES	10
4 USE OF WEB SITE	13
4.1 MONITORING	13

FIGURES

Figure 1 InPro web start page	6
Figure 2 InPro project internal document and collaboration server	7
Figure 3 Menu of the public pages	9
Figure 4 Menu of the internal pages	10
Figure 5 Task list with duration	11
Figure 6 InPro discussion forum	12

TABLES

Table 1 Steps in the InPro web page's history	8
---	---

1 INTRODUCTION

Deliverable D42, Public Web Site, is defined as an object. This document is the written record of the achievement.

The InPro public web site can be found at <http://www.inpro-project.eu>. The start page can be seen in Figure 1. The web address www.inpro-project.org leads to the same web site.

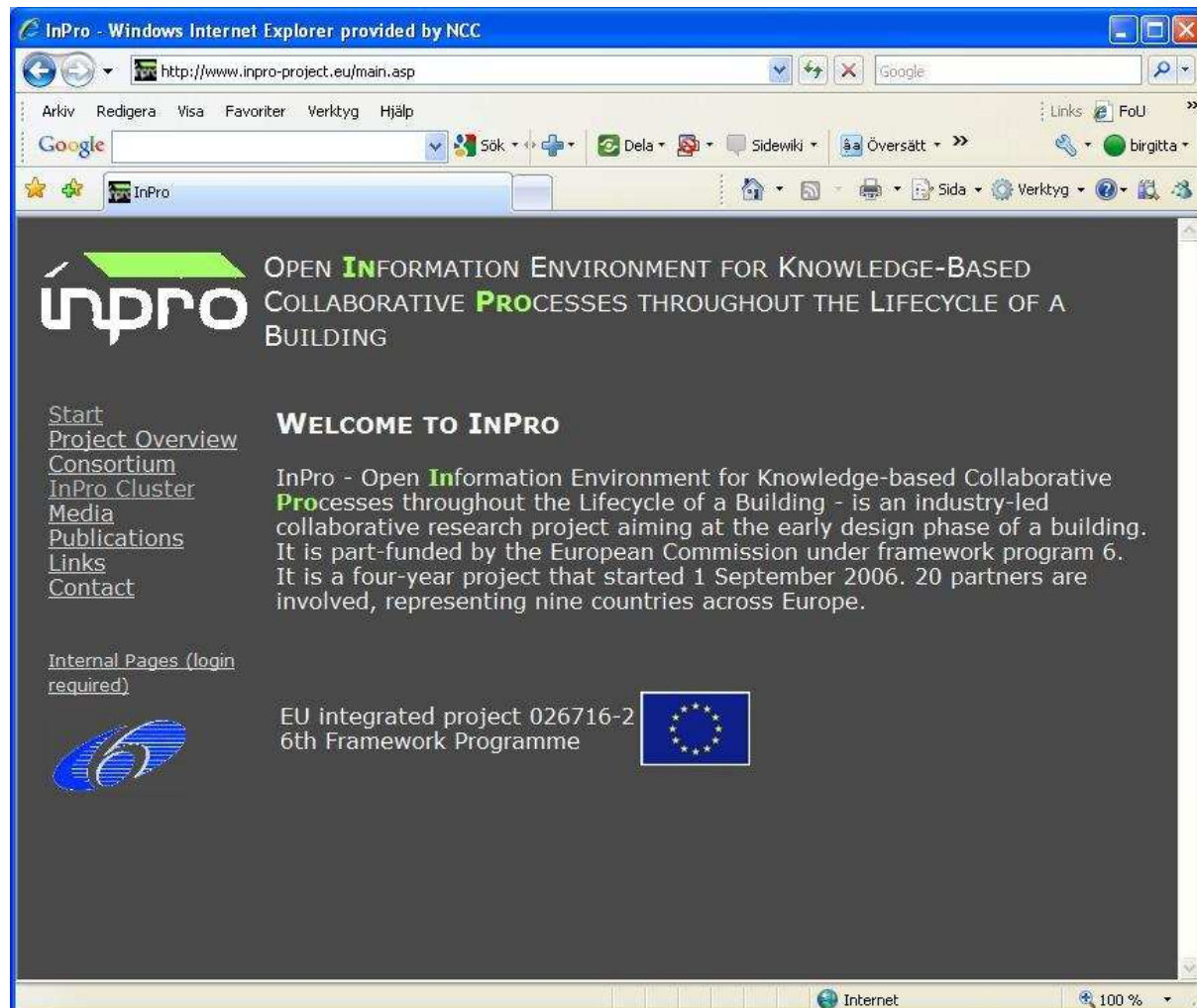


Figure 1 InPro web start page

Besides the external public web site, a project internal web site has been used as a document and collaboration server. This web site can be found at <http://inpro.sharepointlive.de>. The start page can be seen in Figure 2. The access to this document server is restricted and has only been given to project participants. It was used for storage of all types of project documents: minutes of meetings, work in progress, deliverables and the contract for example. It was also used as a project calendar and a holiday list.

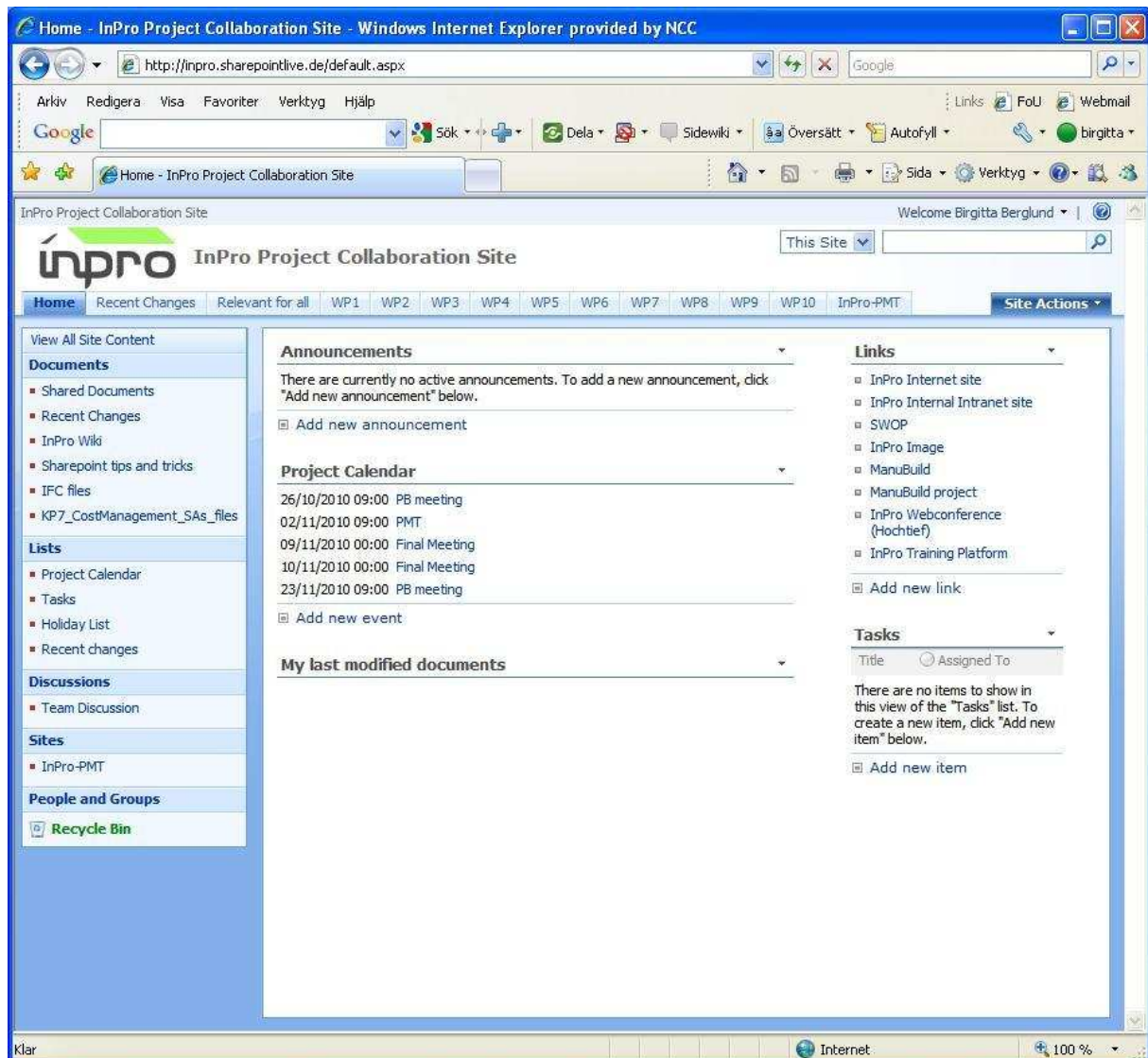


Figure 2 InPro project internal document and collaboration server

2 EVOLUTION OF THE WEB SITE

2.1 History

The table below (Table 1) shows the most important steps in the InPro web page's history:

Date	Event
June 2006	The two InPro domains (inpro-project.eu and inpro-project.org) were registered
Autumn 2006	The InPro web page was opened shortly after the project started. At first the page was hosted on a server at TNO (project partner number 18). A couple of months later it was transferred to a server at NCC (project partner number 1).
April 2007	Login functionality is added to the web page. Access is given to project participants and InPro Cluster members. A discussion forum is added.
July 2010	The web site moved to a different server. This change was not visible to the public. At the same time, the login functionality was changed; instead of individual logins, all now had the same password to access the restricted pages.
December 2010	After the end of the project, the web page will change slightly. It will describe the project in the past tense and include results for a long-term management.

Table 1 Steps in the InPro web page's history

The web page has been continuously maintained and updated when needed.

2.2 Long-term Management

As the InPro web site is hosted on the NCC server, the pages can remain after the end of the project, without extra cost. The cost for the domain name is paid by the NCC IT department, together with all other domains that are owned by NCC.

After the end of the project, the web page will be updated with information that the project has now ended. There will be contact information to the project participants, as well as to the Cluster members. Relevant documentation and information about the InPro developed training will be available. For more information about this, see InPro deliverable D39 (Long-term Management of Results).

As long as the key persons within NCC who were involved in the InPro project, are still employed by NCC, the web site can be maintained and updated if needed. When the content becomes obsolete and outdated, the site will be removed.

3 CONTENT

The web page is divided into public and internal pages. The internal pages are password protected. Until July 1st 2010 the password protection was using a freeware (ASP login by Todd Woolums) system. After the change of server of July 2010, the password protection is stronger (valid for a complete folder), but the same password is used for all users. The password is changed regularly.

3.1 Public Pages

The menu of the public pages can be seen in Figure 3. The content of the pages will be further described below.



Figure 3 Menu of the public pages

Start

The start page is the first page that meets the user. It contains a short introduction to the project.

Project Overview

The project overview gives more insight into the project. It presents the main objectives and the planned output.

Consortium

This page lists all the project participants: Each partner is presented with its logotype, a description of the company, its role and interest in InPro. There is also a link to the company's web site and contact information (name and phone number).

InPro Cluster

The cluster page gives information about the cluster: the objectives and the benefits. There is also information about how to become a member. Through a link a list of all 78 cluster members can be accessed. This list contains the name, the web address and the logotype of all cluster members.

Media

The media page presents lists of InPro's presence in the media: scientific articles/papers with results from the project (dissemination other than project deliverables), published articles from the press, press releases and web articles.

Publications

The publication page presents all public deliverables of the project as well as public versions of restricted deliverables. With a few exceptions, all restricted deliverables are available in a public version.

Links

The link page presents links to other organisations and projects in the European research community.

Contact

This page gives contact information, e-mail and post address, to the project's coordinator.

3.2 Internal Pages

The menu of the internal pages can be seen in Figure 4. The content of the pages will be further described below.



Figure 4 Menu of the internal pages

Welcome

The start page welcomes the users: the InPro partners, the Cluster members and the EU Commission.

Members of the Cluster

The cluster page gives the same information as the public page, with the addition of the recommending partner for each cluster member. A document describing each cluster member's organisation and interest in InPro can also be downloaded.

Mailing Lists

This page lists the available mailing lists for the project participants and for the cluster members. Several mailing lists have been in use during the project; project internal and including the cluster. If needed, further lists can be created, also for a period after the end of the project.

InPro Reports

This page gives access to the project's full list of deliverables, including the restricted ones. This is where the cluster members have access to these documents.

InPro Tasks

The task list gives a brief introduction to all tasks and work packages in the project. It also has contact information to the work package and task leaders. Through a link the page below (Figure 5) can be found, which shows the duration in time of all tasks.

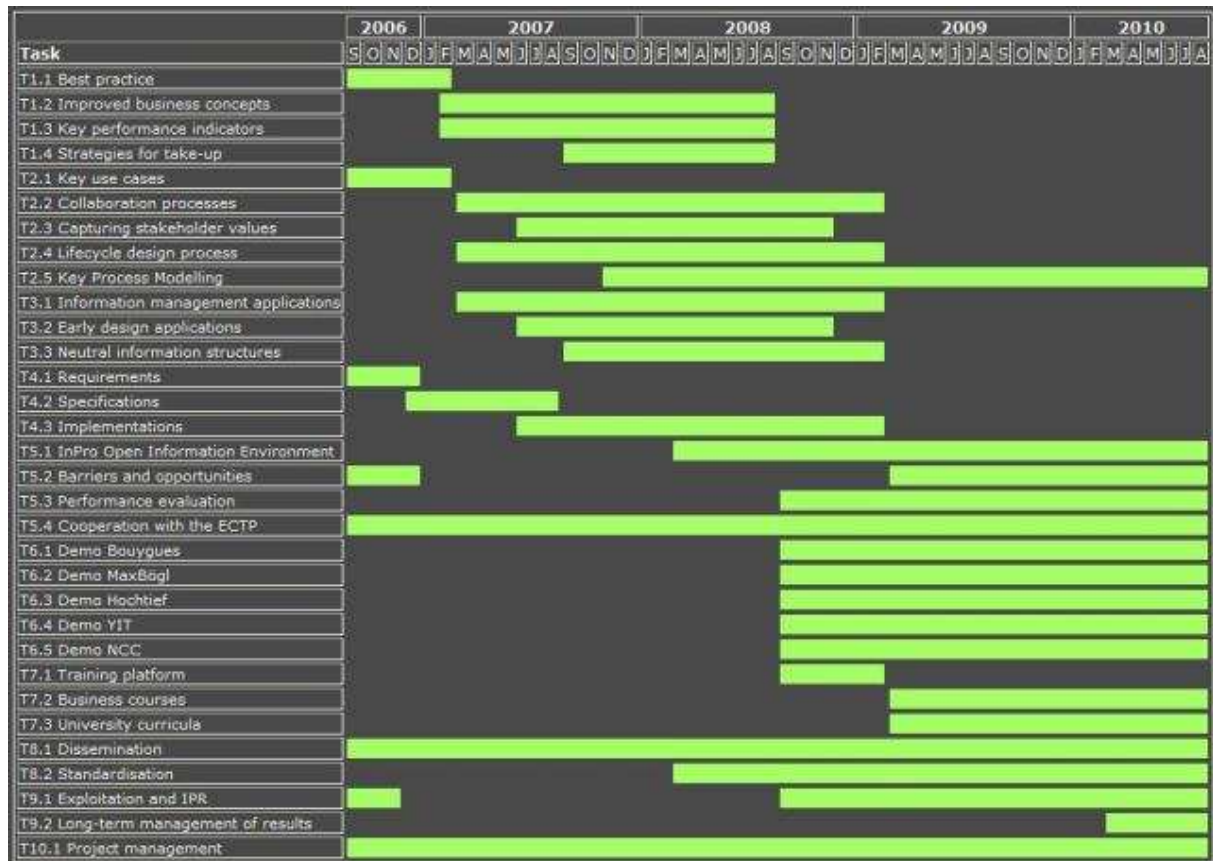


Figure 5 Task list with duration

Discussion Forum

This link gives access to the discussion forum, see Figure 6. To access the forum the user needs to log in. Access rights have been distributed to all project partners and to the Cluster members. The forum is implemented using a freeware (Web Wiz Forum, version 8.05) system.

The discussion forum has been used whenever there was a need, but it will not be available after the end of the project.

InPro - Windows Internet Explorer, provided by NCC

http://www.inpro-project.eu/forum/default.asp

inpro

Active Topics Memberlist Search Help

Settings Logout [BingttaB]

Online buzz analysis
Learn what consumers are saying about brands in blogs and forums.
www.whitevector.com

phpBB forum - 29 kr/mån
Installeras på 1 minut hos Surtown
20 GB webhotell med 1Click Toolbox
www.surtown.se/phpbb

Need vBulletin Service?
We serviced over 200 clients.
Professional vBulletin Service
SE-OUTS.com

Ad by Google

The time now is 12:18.
You last visited 2010-Jan-20 at 08:30

RSS

Forum	Topics	Posts	Last Post
InPro			
InPro Forum for discussions	1	1	2010-Jan-14 at 11:38 By BingttaB
Project Work Only for project participants	0	0	
Forum	Topics	Posts	Last Post
Announcements			
Deliverables New InPro deliverables are announced here	9	9	2009-Dec-15 at 13:14 By BingttaB
InPro Cluster New members of the InPro Cluster are announced here.	19	19	2010-Jan-14 at 11:26 By BingttaB
Forum	Topics	Posts	Last Post
Administration			

Figure 6 InPro discussion forum

4 USE OF WEB SITE

The InPro public web site has been the project's window to the world. From the web site information regarding the project and the results are available. All public reports and deliverables from the project can be downloaded from the web site. It is an easy way to give external people access to documentation, by referring them to the web site.

When the project had to perform a competitive call for a new project partner (autumn 2008), the web site was used for information about the call. All documentation that was needed to make a proposal could be found at the web site. The published ads (in various news papers) referred to the InPro web site.

The contact e-mail address that can be found on the web site has been used now and then: mainly for people interested in becoming members of the cluster.

4.1 Monitoring

There has been no monitoring of the use of the web site. No counter has been integrated. Therefore it is not possible to state the number of visitors to the web site.

REFERENCES

InPro report Deliverable D39 (2010), task 9.2 'Long-term Management of Results'

Woolums, Todd: ASP Login (29 January 2010):

<http://www.toddwoolums.com/asplogin.asp>

Web Wiz Forum (29 January 2010): <http://www.webwizforums.com/>